



## Darlington Public School

### Travel Access Guide

December 2023

#### Project overview

Darlington Public School upgrade provides the latest education facilities for students and staff, and will support the growing local community.

#### Active ways to get to school



Walking is an active and healthy way to get to school

- Students and Staff Members within 800 m radius of the school are encouraged to walk.
- Footpaths provide convenient and direct connections between the school and surrounding streets.
- Golden Grove Street and Abercrombie Street have raised zebra crossings providing increased safety to/from School.



Ride your bike

- Students living within 2km radius of the school are encouraged to cycle to School.
- There are on-road and off-road cycling paths in the vicinity of the school.
- In NSW cyclists under the age of 16 are allowed to ride on footpaths.



Ride your scooter

- The School provides 63 bicycle and 82 scooter parking spaces.

#### Message from your Principal

- Darlington Public School support sustainably and environmentally friendly transport practices.
- We strongly encourage our school community to walk or ride a bicycle to school either independently or with parental supervision.
- School opens at 8.30am
- The end of the school day is 3pm
- Before school care operates from 7am
- After school care operates from 3-6pm

#### Kiss and drop expectations

- There is no on-site car parking.
- On-street drop-off and pickup zone with capacity for 5-6 cars is provided at Golden Grove Street.

For more information contact:

School Infrastructure NSW

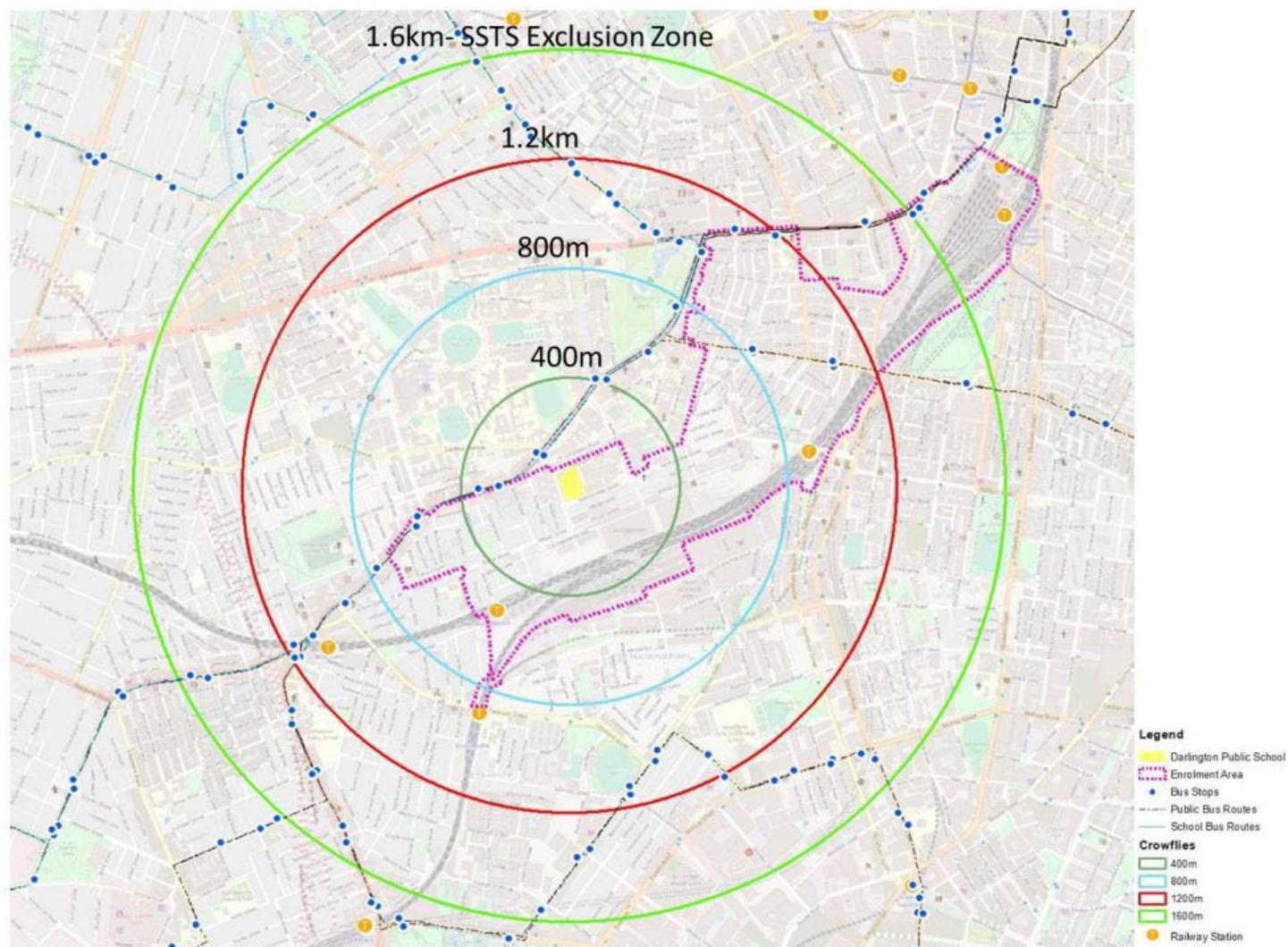
Email: [schoolinfrastructure@det.nsw.edu.au](mailto:schoolinfrastructure@det.nsw.edu.au)

Phone: 1300 482 651

[www.schoolinfrastructure.nsw.gov.au](http://www.schoolinfrastructure.nsw.gov.au)

Classification - Public

## Local map: Active Travel



For more information contact:

School Infrastructure NSW

Email: [schoolinfrastructure@det.nsw.edu.au](mailto:schoolinfrastructure@det.nsw.edu.au)

Phone: 1300 482 651

[www.schoolinfrastructure.nsw.gov.au](http://www.schoolinfrastructure.nsw.gov.au)

Classification - Public



| Legend                                |                         |
|---------------------------------------|-------------------------|
| <span style="color: blue;">●</span>   | School Pedestrian Entry |
| <span style="color: blue;">—</span>   | Pedestrian Footpath     |
| <span style="color: red;">—</span>    | Separated Cycleway      |
| <span style="color: green;">■</span>  | Pedestrian Crossing     |
| <span style="color: purple;">■</span> | Signalised Crossing     |

For more information contact:

School Infrastructure NSW

Email: [schoolinfrastructure@det.nsw.edu.au](mailto:schoolinfrastructure@det.nsw.edu.au)

Phone: 1300 482 651

[www.schoolinfrastructure.nsw.gov.au](http://www.schoolinfrastructure.nsw.gov.au)

Classification - Public

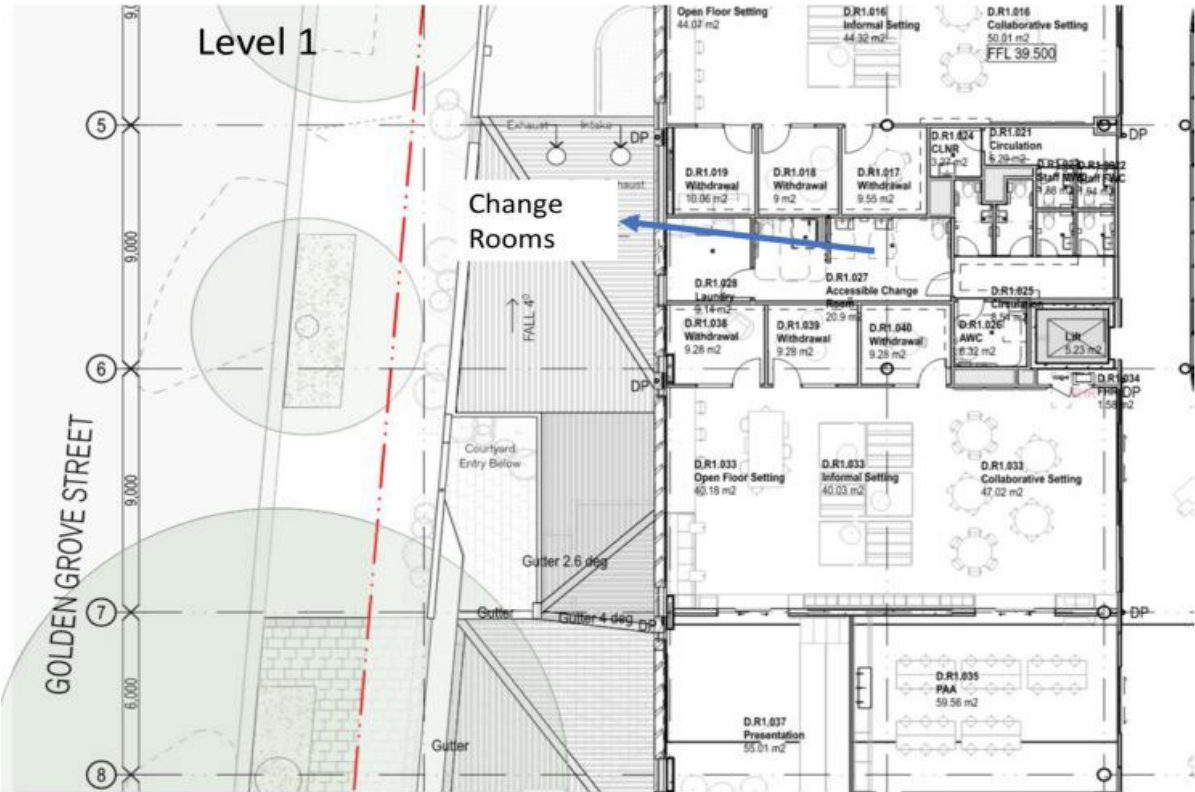
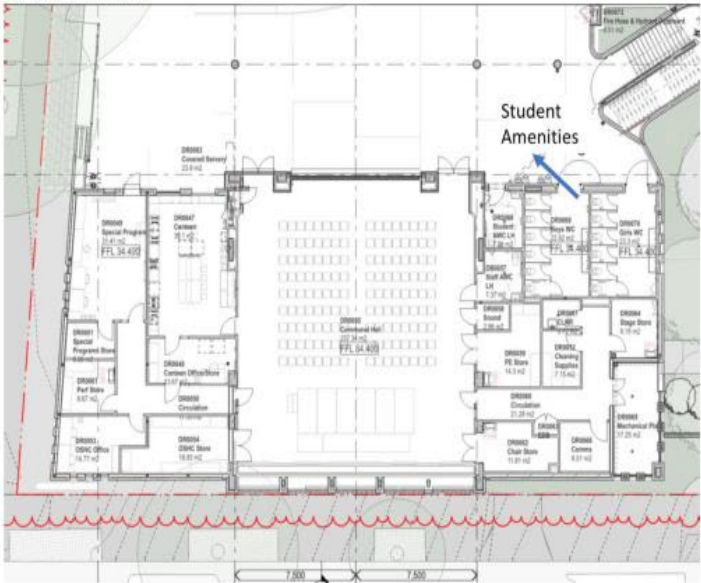


| End of Trip Facilities |           |
|------------------------|-----------|
| Bicycle Spaces         | 63 Spaces |
| Scooter Spaces         | 82 Spaces |

Lower Ground



Ground Floor



For more information contact:  
School Infrastructure NSW  
Email: [schoolinfrastructure@det.nsw.edu.au](mailto:schoolinfrastructure@det.nsw.edu.au)  
Phone: 1300 482 651  
[www.schoolinfrastructure.nsw.gov.au](http://www.schoolinfrastructure.nsw.gov.au)

